

CORR-DEFENSE



Solutions Designed by Experts - 2024





Solutions Designed by Experts - 2024

ABOUT US

Corr-Defense is a company with years of experience in the manufacturing and supply of products for the military and government sectors in the United States. Our dedication and commitment to quality have allowed us to become a trusted partner for various defense agencies and entities, providing solutions that meet the highest standards of safety and efficiency.

We have a team of highly skilled professionals, each with over 15 years of experience in the industry of internal and external corrosion monitoring, specifically related to the Oil & Gas sector. This experience has enabled us to develop innovative and highly efficient products that ensure the integrity and durability of critical infrastructures. At Corr-Defense, we are committed to excellence and innovation, ensuring that every product we deliver is designed to exceed the expectations of our most demanding customers.



Solutions Designed by Experts - 2024

OUR REACH

Corr-Defense is a leading company in the security and defense industry, renowned for its innovation and commitment to excellence. One of Corr-Defense's key strengths is its ability to operate effectively in a global market, with strategic representations in multiple regions around the world. These representations not only allow Corr-Defense to provide more efficient and personalized local support but also facilitate the understanding of the specific needs and challenges of each region. Corr-Defense's global presence ensures that its security solutions are both robust and adaptable, enabling the company to respond quickly to emergencies and offer exceptional services to a diverse and ever-growing clientele.

Purpose

- ⊕ To innovate safety and develop end user confidence and trust

Value

- ⊕ Uniquely positioned to supply products and services that can complement, integrate and support projects from the design stage, through to maintenance and data retrieval services and analysis

Experience

- ⊕ A team comprised of experts in monitoring hardware and systems



Our Certified Standards

AMERICAN TOTAL QUALITY



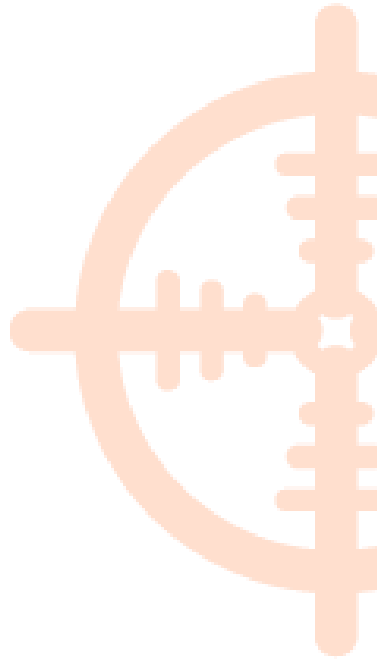
ISO 9001:2015



ISO 14001:2015



ISO 45001:2018





Solutions Designed by Experts - 2024

Services

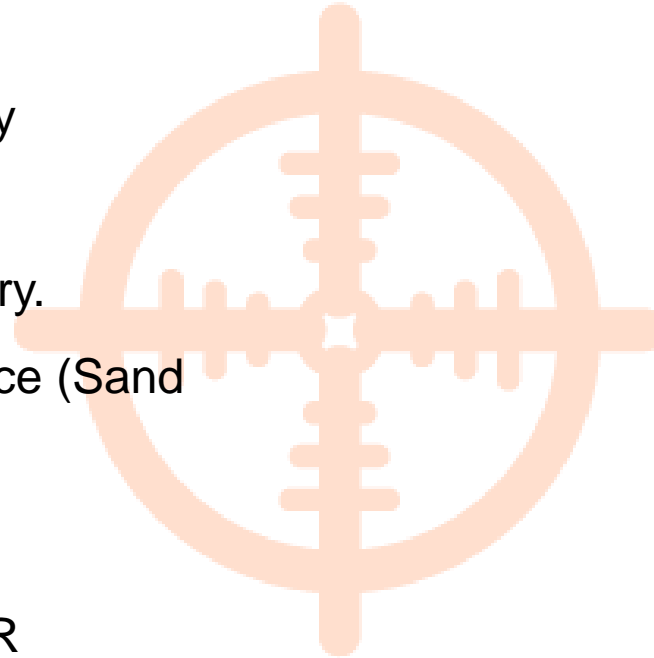
- ⊕ Online retrieval of corrosion coupons and monitoring probes – Hydraulic and Mechanical
 - Coupon analysis and Probe data reporting
 - Site surveys and equipment audits of corrosion, erosion and chemical injection systems
 - Chemical optimization and performance evaluation projects
 - Sidestream monitoring
 - Corrosion and Erosion control well testing services
 - Hot-tapping of new access systems
 - Installation of permanent UT monitors

Competence & Safety

- ⊕ Certified trainers in both hydraulic and mechanical access systems
- ⊕ 4 Teams of 2 trainers available from Houston

Services

- Treatment of soil contaminated by hydrocarbons.
- Various services for the oil industry.
- Preventive/Corrective Maintenance (Sand Blast).
- Special Paintings in UDC
- Microbial Monitoring ATP and PCR



CORR-DEFENSE

Solutions Designed by Experts - 2024



PHOTOGRAMMETRY

Image Processing and Analysis

Specialized software and algorithms are employed to analyze and process the photographic images, extracting precise information about the shape and dimensions of objects in the real world.

Aerial Image Acquisition

Using drones, photographic images of the terrain or area of interest are captured.

Creation of Maps and Digital Terrain Models

The images and information obtained are used to create highly accurate and detailed maps and digital terrain models.

Generation of Geographic Information Products

Maps and digital terrain models are utilized to generate geographic information products, such as thematic maps and 3D visualizations, for use in specific software applications.

Topographic Surveys

The images and information are used to conduct precise and detailed topographic surveys of the terrain, including altitude, shape, and terrain features.

Inspection and Monitoring of Infrastructure

Images and information are used for inspections and monitoring of the condition of infrastructure such as roads, bridges, buildings, and others.

Terrain Change Analysis

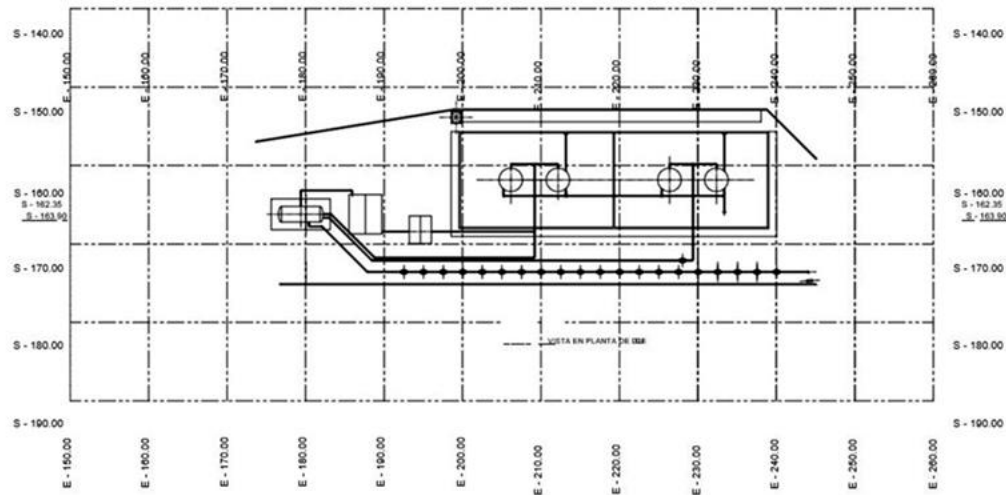
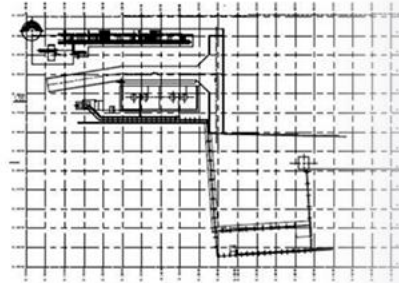
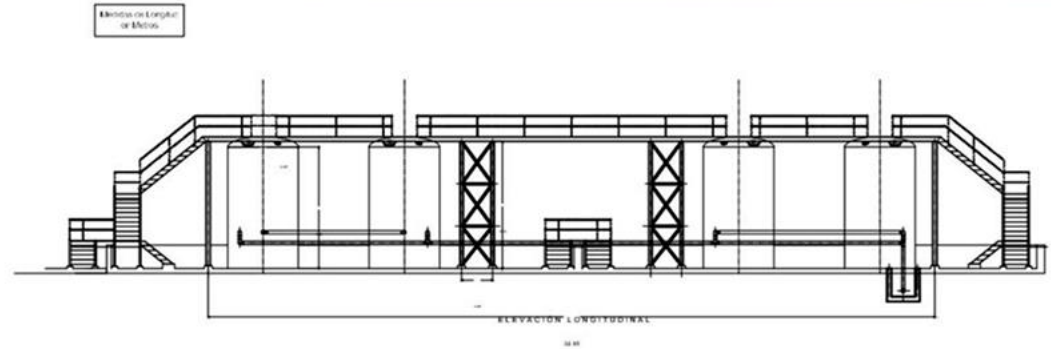
Images and information are used to analyze changes in the terrain over time, detecting changes in vegetation, land use, and more.

Environmental Impact Assessments

Images and information are employed for environmental impact assessments, evaluating the impact of projects or activities on the environment..

Photogrammetry

Piping and Instrumentation Diagram (P&ID)



PLANO DE LOCALIZACIÓN

SIMBOLOGÍA:

	INDICA BOMBA HORIZONTAL
	INDICA MÓDULO
	INDICA DUCTO ENTERRADO DE CONTROL
	INDICA TRAYECTORIA DE SISTEMA DE TIERRAS
	INDICA DUCTO ENTERRADO DE PURGA SALA 1
	INDICA REGISTRO DE FUERA BALANCE
	INDICA REGISTRO DE CONTROL
	INDICA AREA A MODIFICAR
	INDICA PATRÓN DE EQUIPO DE BOMBEO
	INDICADOR DE SEÑAL CONTROL EN SERVO
	REGISTRO HIDRAULICO
	INDICA REGISTRO PULSAL CON TAPA A BASE DE BRONCE CIRCULAR DE FIERRO FUNDIDO
	INDICA REGISTRO PULSAL CON TAPA A BASE DE REJILLA DE FIERRO FUNDIDO RECTANGULAR
	INDICA REFERENCIA DE NIVEL DE PISO OBTENIDO CON EL REGISTRO LEVANTAMIENTO TOPOGRAFICO
	INDICA DE MATERIAL EN PISO
	INDICA NIVEL DE PISO
	INDICA NIVEL VISTO EN ALZADO
	CAMBIO DE NIVEL
	NIVEL DE SANGUETA
	NIVEL DE PISO TERMINADO
	NIVEL DE TERRENO NATURAL
	NIVEL ENTERRADO/ACRISTALADO
	NIVEL TORO DE SALANTE EXTERIOR
	NIVEL TORO DE SALANTE INTERIOR
	NIVEL TORO DE REJILLA
	NIVEL DE PLANTANTE DE CONCRETO
	NIVEL DE TURBINA
	NIVEL DE TERRACERÍA TERMINADA
	RADIO
	LINEA DE CENTRO
	EXCEPTO INDICADA
	INDICA TAPA REGISTRO A BASE DE REJILLA
	INDICA COLUMNA

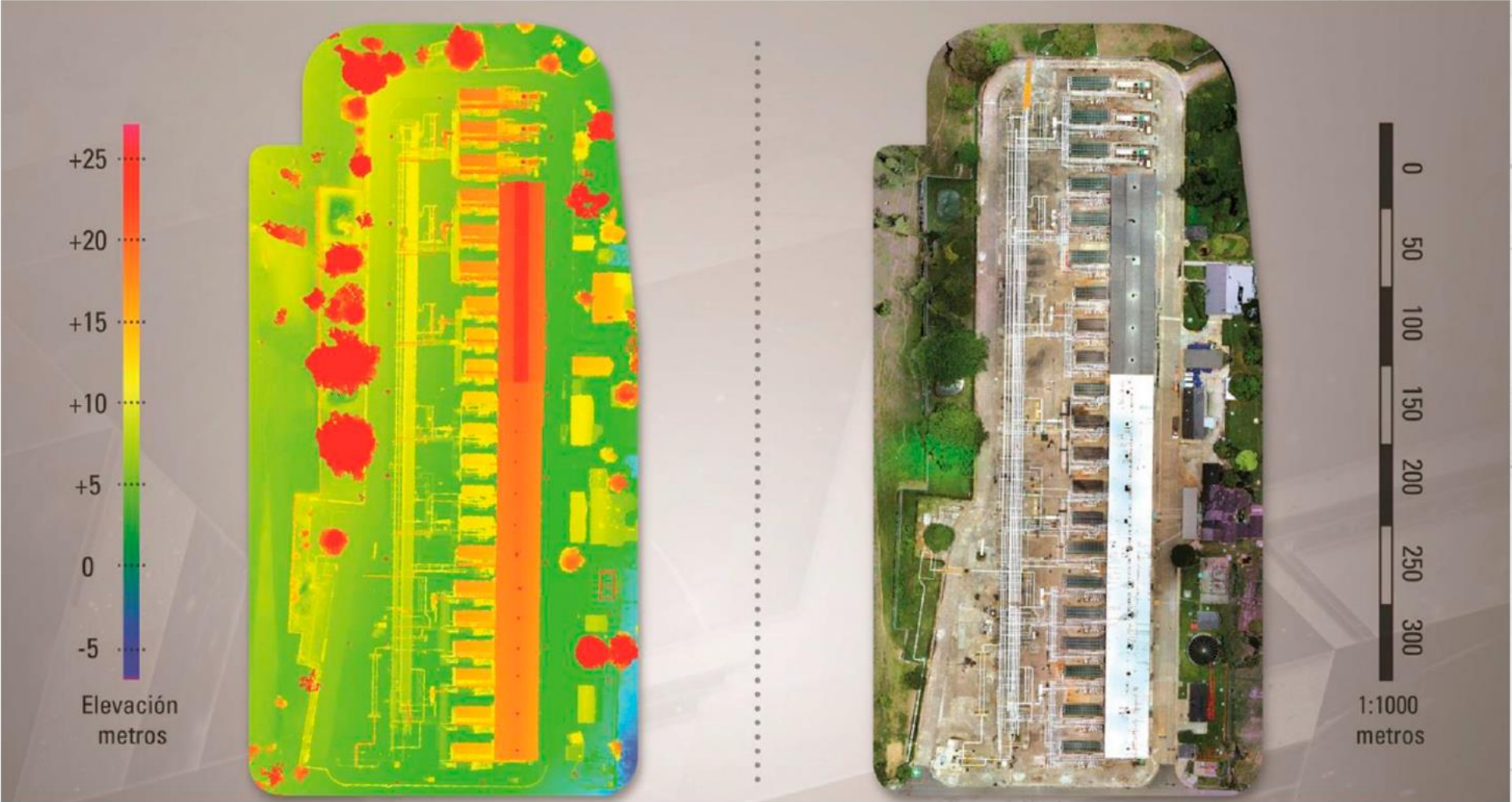
NOTAS:

1. DIMENSIONES EN CENTIMETROS, EXCEPTO INDICADO
2. NIVELES EN METROS
3. DIAMETROS EN MILIMETROS
4. LAS COTAS RESIN AL DIBUJO
5. LAS COORDENADAS ESTAN EN METROS Y SE TOMARON DEL PROYECTO ANTERIOR EXISTENTE
6. ESTE PLANO ES SOLO DE REFERENCIA, TODOS LOS NIVELES, COTAS Y MEDIDAS



Photogrammetry

Elevation Map

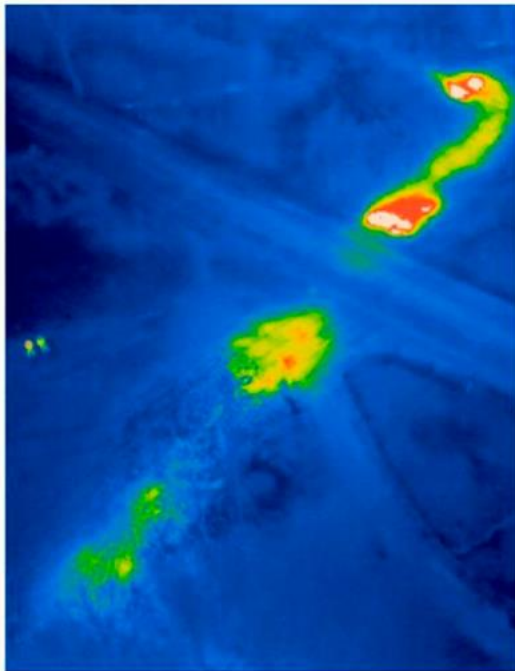


Photogrammetry



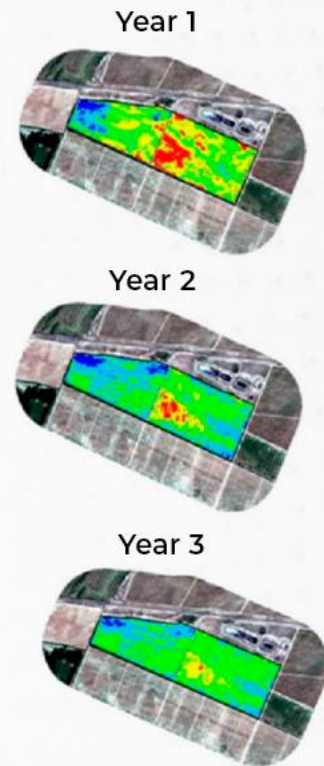
Thermography:

- Image
- Video



NDVI Environmental Analysis:

- Spill Impact
- Compensation Scope



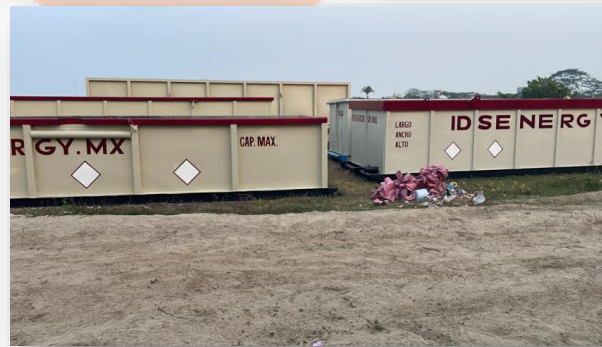
Pipelines:

- Milepost Validation
- Location



*PDF, AutoCAD, GIS, Large Format Laminated Printing

Rental of Campers and Industrial Equipment



C  **R R - D E F E N S E**

RUBBER INSULATING GLOVES



Resistance to High Voltage



Product name: Ordinary insulated gloves
Color: Yellow
Size: One size fits all
Applied Voltage: 5KV/10KV/12KV
Executive Standard: GB/T17622-2008



Resistance Voltage Breakdown

Product name: Hand type insulated gloves, Class 1 Latex insulated gloves
Color: Yellow
Applied Voltage: 20KV/25KV/35KV
Executive Standard: GB/T17622-2008



Product name: Ordinary insulated gloves
Color: Red
Size: One size fits all
Applied Voltage: 5KV/10KV/12KV
Executive Standard: GB/T17622-2008



Product name: Hand type insulated gloves, Class 1 Latex insulated gloves
Color: Red
Applied Voltage: 12KV
Executive Standard: GB/T17622-2008



20KV/ 25 KV/ 35KV



INSULATING GLOVES WITH OPERATING POWER

Product Characteristics

Hand type insulated gloves: Good bending flexibility, high comfort, for regular use, users who have certain requirements for flexibility.

Ordinary insulated gloves: Standby or product flexibility requirements are not high

Applicable Sites

12KV Ordinary: Distribution room, property, business, catering, hotels, hospitals, shopping malls, factories, schools and other distributions cabinets.

12KV Hand type: Live work below 3 kV, machinery, home appliances, new energy electric vehicle maintenance or 380 volt line maintenance, Use frequently or require flexibility

20KV Hand type: 10 kV live work site

25KV Hand type: Work sites with AC voltages less than 21,750 volts and DC voltages less than 32,625 volts

35KV Hand type: Applicable to the place where AC voltages less than 30,000 volts

Insulating Gloves with Operating Power are suitable for electric power, subway, equipment installation, repair, maintenance of work sites, oil drilling platforms, communication inspectors, power contractors, plant and facility maintenance technicians, power field technical service personnel.

CORR-DEFENSE



5KV Ordinary + 20KV Boot



12KV Ordinary + 20KV Boot



10KV Hand Style + 20KV Boot



12KV Hand Style + 20KV Boot



25KV Hand Style + 35KV Boot



35KV Hand Style + 35KV Boot

C  **R R - D E F E N S E**

ANTICUT GLOVES

SPECIFICATION DATA

Product:	CD1780PU
Color:	Gray
Size:	7-11 (S-XXL)
Standard:	CE EN388, EN420
Packing:	1 pairs / polybag 120 pairs / cartón
Carton size:	52*26*30 cm

APPLICATIONS

- **Made of knitted 13 HPPE** shell for lasting use, it has excellent cut resistance, snug fitting and ergonomically-shaped.
- The PU Surface provides excellent dexterity and power grip.
- This glove is not only suitable for heavy-duty work environments such as steel cutting, glass handling, car repair, and mechanical repair, but also for a variety of dexterous tasks, such as cell phone repair, fishing, gardening work, and more.

The PU dipping with high abrasion and tear resistance

13-Gauge HPPE knit shell, it has excellent cut resistance.

The PU palm provides power grip in dry & slightly oily conditions.

Elastic knitted cuff for a secure fit.



CD178PU

Anti Cut

CORR-DEFENSE

TACTICAL GLOVES

SPECIFICATION DATA

Product:	CDMC280
Color:	Black, Brown, Green
Size:	7-11 (S-XXL)
Material:	58% Nylon, 25% Sheepskin, 2% Neoprene, 2% Rubber, 3% PVC
Standard:	CE EN388, EN420
Packing:	1 pairs / polybag 150 pairs / carton
Carton size:	65*45*45 cm

APPLICATIONS

- **The non-slip palm** ensures a secure fix, even on wet or greasy objects.
- The extra reinforcement material has an optimized geometry that absorbs a large amount of energy to protect against impact, pinching, or impact, helping to prevent injury.
- This glove is not only suitable for heavy-duty work environments such as oil field and gas stations steel cutting, glass handling, car repair, and mechanical repair, but also for a variety of dexterous tasks, such as cell phone repair, fishing, gardening work, and more.

CORR-DEFENSE

Thumb crotch can provide reinforcement protect function.

Neoprene materials is breathable, with excellent grip and anti-vibration performance.

Touch screen function on the fingers



Sheep skin leather is comfortable and breathable, tear resistant

Extra reinforcement on the dorsum of the hand and fingers can absorb shocks and impact resistance.



CDMC280

Mechanical

SPECIFICATION DATA

Product:	CDMC285
Color:	Black, Brown, Green
Size:	7-11 (S-XXL)
Material:	28% Microfiber, 25% Nylon, 28% Neoprene, 2% Rubber, 12% PVC
Standard:	CE EN388, EN420
Packing:	1 pairs / polybag 150 pairs / cartón
Carton size:	65*45*45 cm

APPLICATIONS

- **The breathable palm** ensures a secure fix, even on wet or greasy objects.
- The extra reinforcement material has an optimized geometry that absorbs a large amount of energy to protect against impact, pinching, or impact, helping to prevent injury.
- This glove is not only suitable for heavy-duty work environments such as oil fields and gas stations steel cutting, glass handling, car repair, and mechanical repair, but also for a variety of dexterous tasks, such as cell phone repair, fishing, gardening work, and more.

CORR-DEFENSE

Elastic nylon wrist can fit your hands very well.

Extra reinforcement on the dorsum of the hand and fingers can absorb shocks and impact resistance.

PVC reinforcement can protect your hands from impact.

Touch screen function on the fingers make the work more easier .

Super fiber and knitted fabric is very breachable.



CDMC285

Mechanical

C  **R R - D E F E N S E**

CHEMICAL GLOVES

SPECIFICATION DATA

Product name:	Anti-Chemical Gloves
Color:	Black/Customized color
Size:	S, M, L, XL
Material:	Butyl
Application:	Chemical Industry
Length:	11 – 14 inches
Standard:	EN ISO374-1: 2016/Type A. CE Certified

Excellent chemical resistance: The ergonomically designed reusable work gloves are made of Butyl Rubber Latex, have excellent elasticity and durability, and offer high resistance to chemicals, acids, alkalis, solvents, and mechanical hazards.

Rubber work gloves are ideal for handling chemicals, petrochemical operations, mechanical manufacturing, mining, agriculture, gardening, construction, industrial work, handling hazardous materials, forestry, car washing, household cleaning, and much more.

Next-level performance: These chemical gloves are CE 0598 CAT III certified, meeting standards EN 388:2016, EN 420, EN ISO374-5:2016, EN ISO374-1:2016/Type A, and comply with CA Prop.65 standards for phthalates.

CORR-DEFENSE



CORR - DEFENSE



2001 Timberloch place
#500The Woodlands, Tx 77380



info@corr-defense.us



corr-defense.us